

AIR TORQUE

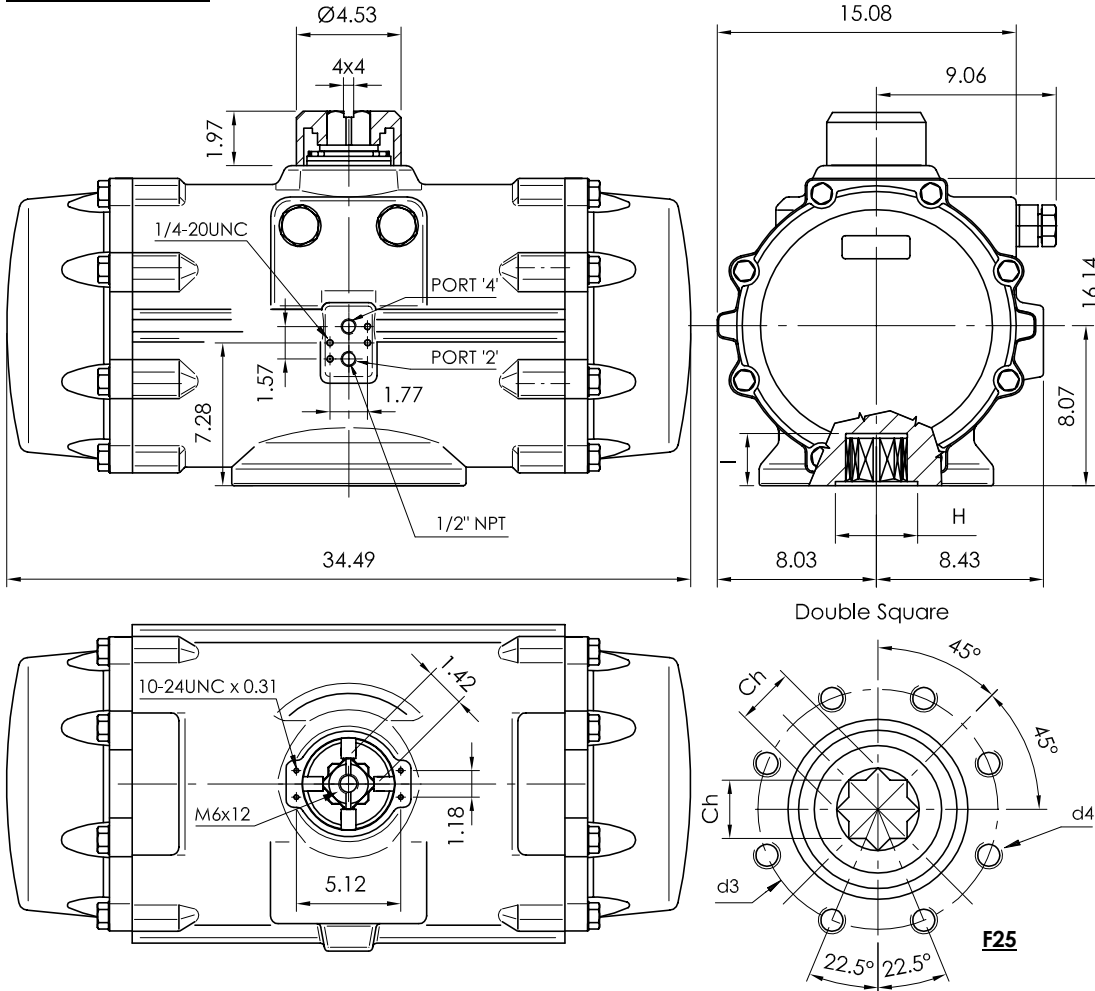
AIR TORQUE S.p.A.
 Via Alla Campagna, N°1
 24060 Costa di Mezzate (Bg) Italy
 Tel.: +39 035 682299
 Fax: +39 035 687791
 E-mail: info@airtorque.it

Technical Data Sheet n° **PT800DU**
 Issued on: 01/05

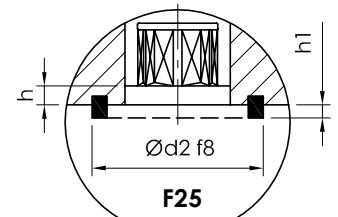
Page: 1/1

Model PT800
DA and SR - 90°

Dimensions in inch



Flange Dimensions	
ISO 5211	F25
d2 f8	7,87
d3	10
d4	5/8-11UNC x 0,94
H	7,87
Ch	2,17
l min.	2,24
h min.	0,1
h1	0,16
Pressure connection	N 4
Ancillary Attachment	AA 4



Spigot available only on request

TYPE	OUTPUT TORQUE FOR DOUBLE ACTING IN FT-LBS								WEIGHT (LBS)						
	40 Psi		50 Psi		60 Psi		70 Psi		80 Psi		90 Psi		100 Psi		
Pressure	0°	90°	0°	90°	0°	90°	0°	90°	0°	90°	0°	90°	0°	90°	
D	1833		2291		2749		3208		3666		4124		4582		280

TYPE	OUTPUT TORQUE FOR SPRING RETURN IN FT-LBS												Spring stroke		WEIGHT (LBS)			
	40 Psi		50 Psi		60 Psi		70 Psi		80 Psi		90 Psi		100 Psi			90°	0°	
Pressure	0°	90°	0°	90°	0°	90°	0°	90°	0°	90°	0°	90°	0°	90°	0°	90°	Start	End
S 05	1155	920	1613	1378	2071	1836	2530	2295	2988	2753	3446	3211	3904	3669	913	678	317	
S 06	1019	737	1477	1195	1935	1653	2394	2112	2852	2570	3310	3028	3768	3486	1096	814	325	
S 07	883	555	1341	1013	1799	1471	2258	1930	2716	2388	3174	2846	3632	3304	1278	950	333	
S 08			1206	830	1664	1288	2123	1747	2581	2205	3039	2663	3497	3121	1461	1085	341	
S 09			1070	647	1528	1105	1987	1564	2445	2022	2903	2480	3361	2938	1644	1221	348	
S 10					1392	923	1851	1382	2309	1840	2767	2298	3225	2756	1826	1357	356	
S 11							1716	1199	2174	1657	2632	2115	3090	2573	2009	1492	364	
S 12									2038	1474	2496	1932	2954	2390	2192	1628	371	

Max. Pressure	Rotation	Screw stroke Adjustment	Chamber φ (inch)	Air Volume (in ³)			Moving Time (Sec.) (A)		Operating Temperature (°F) (B)		
				Opening	Closing		Opening	Closing	STD (standard)	HT (high temperature)	LT (low temperature)
100 Psi	90° ±4° at 0° and 90°	For 1° adj. need 1/4 Turn	12,99	1526	2441	D 6,0 S 7,5	D 7,0 S 8,5	NBR "O" ring - 4 to + 176	FPM "O" ring + 5 to + 300	Silicone "O" ring - 40 to + 176	

Notes:
 (A) The above indicated moving time of the actuator, are obtained in the following test conditions:
 (1) Room Temperature, (2) Actuator Stroke 90°, (3) Solenoid Valve with Orifice Of 11 mm and a flow capacity Qn 6000 L/min., (4) Inside pipe diameter 11 mm, (5) Medium clean air, (6) Air supply pressure 5.5 bar (79,75 Psi), (7) Actuator without external resistance load. **Cautions: obviously on the field applications when one or more of the above parameter are different, the moving time will be different.**
 (B) For HT (high temperature) and LT (low temperature) services, a special Lubricant is requested. Please contact Air Torque factory.

Operating Medium:
 The operating medium must be free of dust and oil. The maximum particle size must not exceed 30µm (ISO 8573 Part1, Class5). In order to prevent water condensation and/or solidification – ice, when actuator work below 0°C (32°F) – the operating medium must have a dew point equal to -20°C (-4°F) or, at least 10°C below the ambient temperature (ISO 8573 Part1, Class3).