

GAS AND VAPOR COMPRESSOR (GVC)

The Apex Advanced Gas and Vapor Compressor (GVC) system has been designed to reduce casing gas pressure in an oil well to increase back pressure which will improve inflow performance. This feature allows the injection of casing gas directly into the flow line. The GVC system is equipped with a fully automated control unit, that will automatically adjust the unit performance based on changing well dynamics. The GVC system can be integrated easily with any artificial lift system, and communicate with intelligent systems to increase production. The unit is easy to install and maintain.

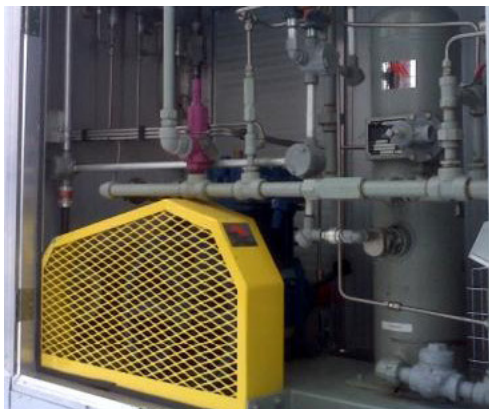
GAS AND VAPOR COMPRESSOR (GVC) FEATURES

- Easy to read and use gauges and control unit.
- Manual or Automatic scrubber dump systems.
- Designed to work in hard winter conditions.
- Graphic display interface for operation.
- Multiple set points (speed, auto-bypass and auto stop/start).
- Overheat and overpressure built-in shut-down protection.
- Alarms can be accessible thru control panel.
- Easy access to the system for maintenance and operation.
- Available to service either sweet or sour gas wells.
- Electrically driven compressor, also available with power generation system.



SPECIFICATIONS:

- Low Oil Pressure Shutdown: 8 PSI (53kPa) Falling
- Low Suction Pressure: 1 PSI (7kPa) Minimum
- High Suction Pressure: 35 PSI (238kPa) Maximum
- High Discharge Shutdown: 100 PSI (700kPa) Single Stage
400 PSI (2720kPa) Dual Stage
- High Temperature Shutdown: 125°C (257°F) Rising
- Compressor Speed: Variable (400 to 900 RPM)



Apex Advanced Solutions can work with you to customize our Gas and Vapor Compressor Units to meet your specific needs.