

Installation & Maintenance Instructions

Rotary Valve Position Indicator

Aluminum Based Construction

ROTARY VALVE
POSITION INDICATOR

I&M No. V7488R7—Sec. 2
(Section 2 of 2)

Notice: These instructions are divided in to two sections. Be sure to read, understand and follow all instructions on I&M No. V7488R7—Section 1 and 2.

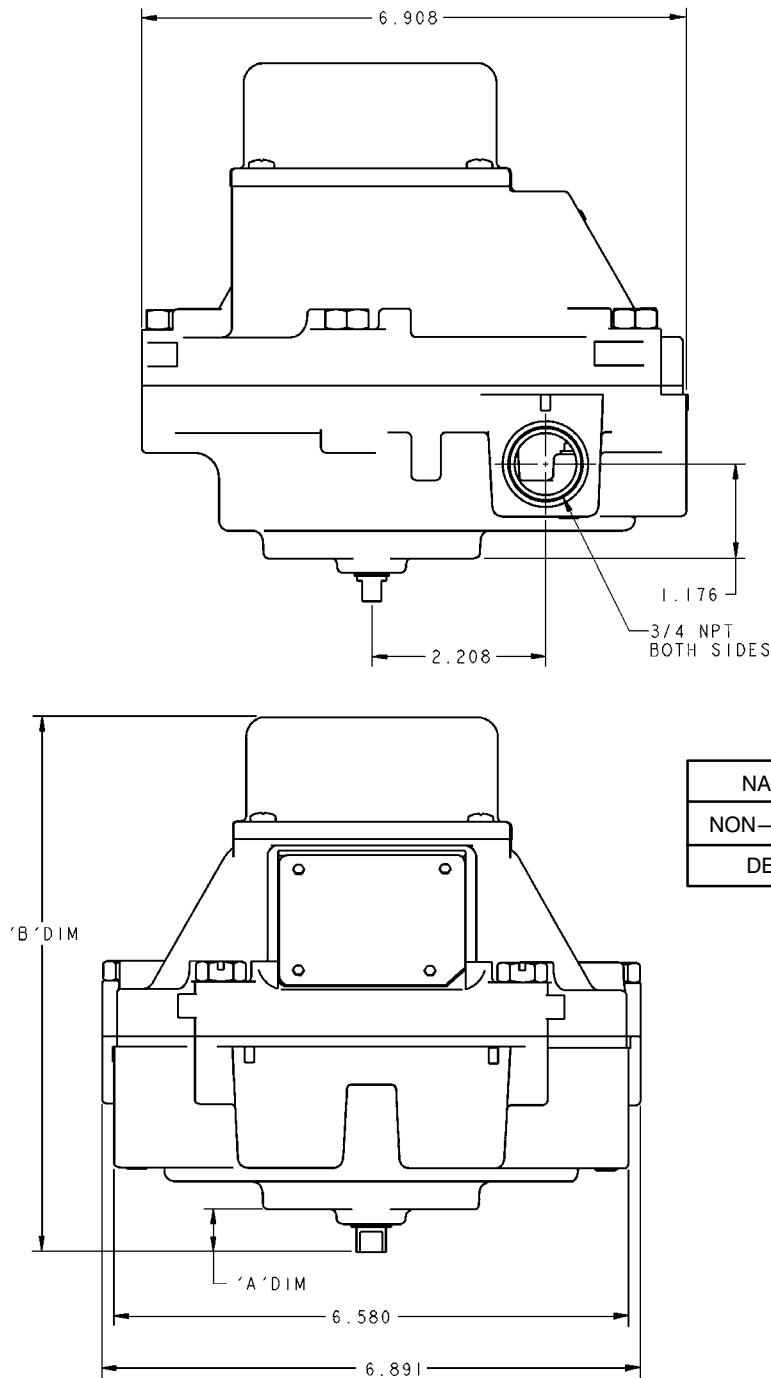


Figure 6. Dimensions

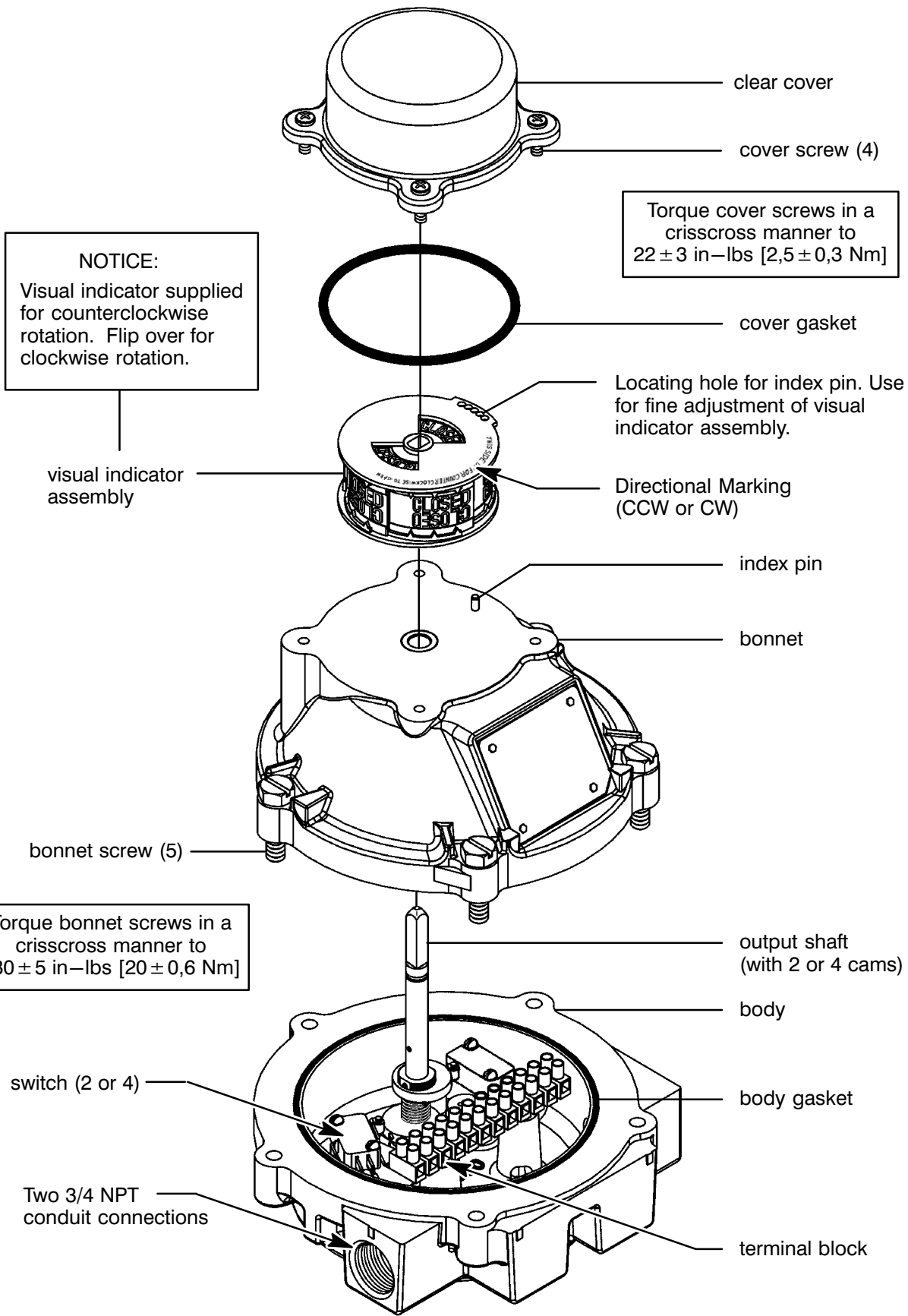


Figure 7. Rotary Valve Position Indicator